

Charter European Trust PLC

The Annual General Meeting
Mark Lovett, Fund Manager

informed
RCM



A company of **Allianz** 
Global Investors

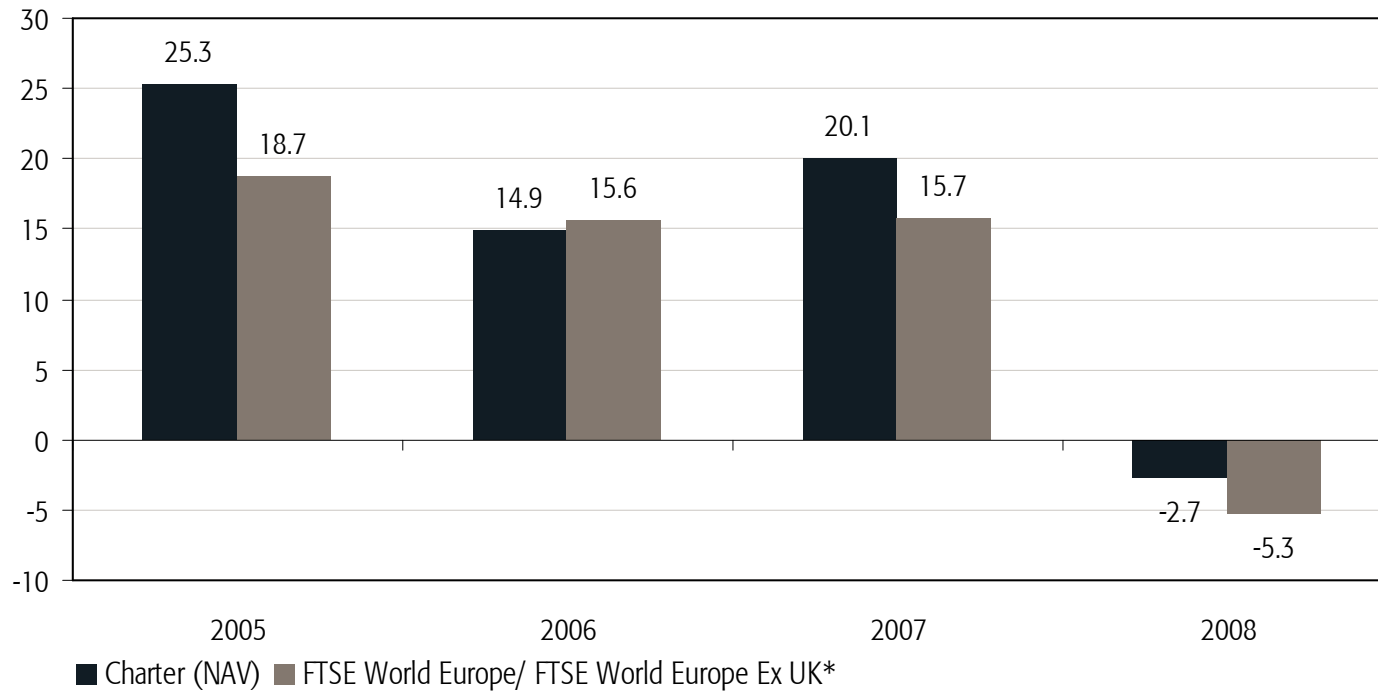
Information *advantage*

Agenda

- Performance – Historical numbers and updates
- Market Background and portfolio themes
- Current portfolio composite

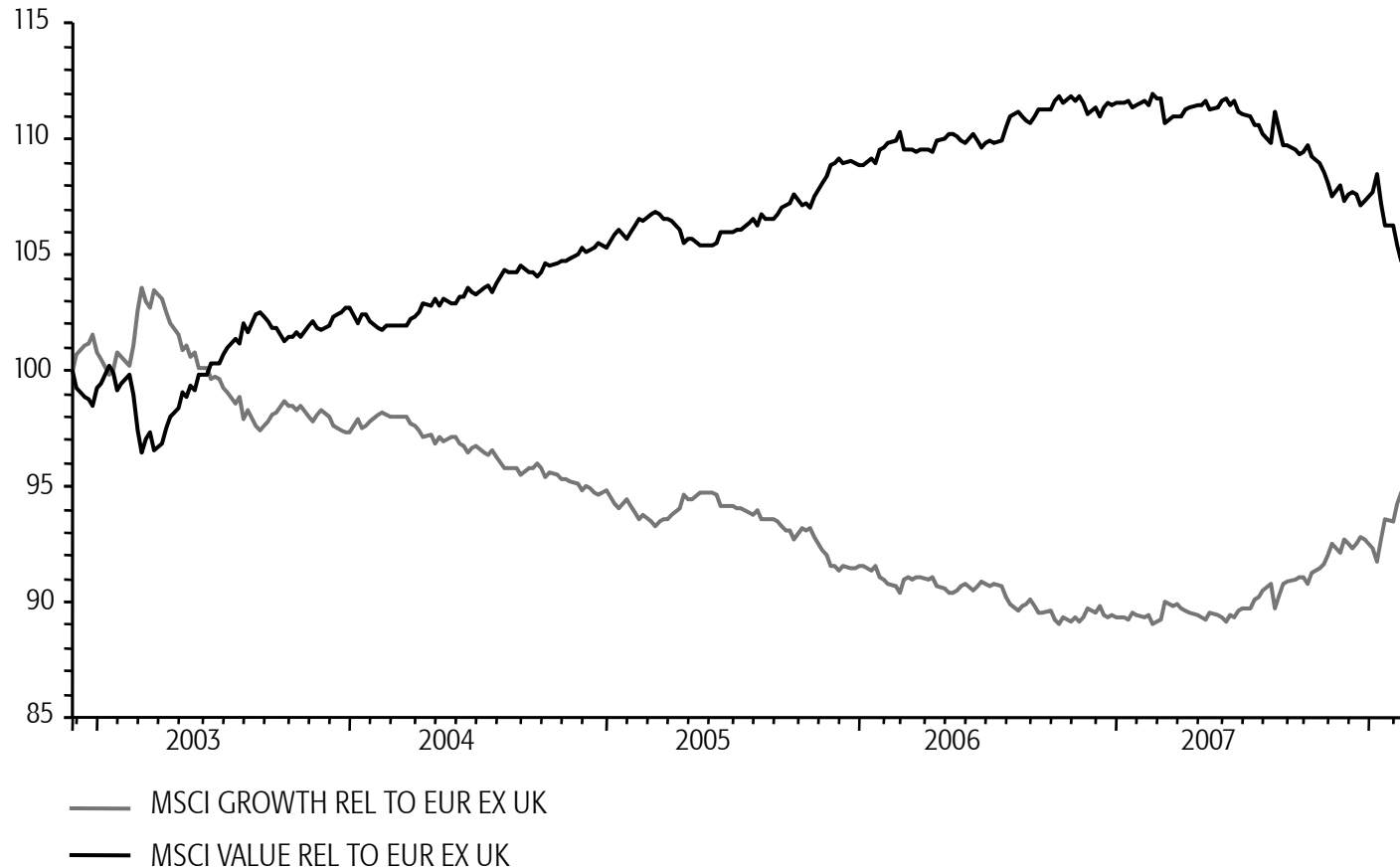
Fund Performance

Update and historical numbers – financial years ending 30 November



- Top performing investment trust in AIC Europe sector for 2007

Continental 'Growth' versus 'Value'



- Trust currently favouring large capitalisation growth companies

Charter European

Portfolio themes

Overweight	Commodities
<ul style="list-style-type: none"> Overweight in Oil & Gas and Industrial Metals sectors are key plays on our belief that Asian economic growth ensures commodity prices stay 'higher for longer' 	

Overweight	Luxury Goods
<ul style="list-style-type: none"> Links in with an underweight position in General Retailers We see a contrasting future between consumption in different socio-economic groupings and geographies Income growth is highly positive in the upper socio-economic segment of the population and in emerging economies (where consumption growth increasingly mirroring industrial production advances) On the other hand, lower income population groups in mature economies continue to be squeezed by higher taxation and utility bills while wage growth remain subdued Luxury goods sector key play on this theme 	

Overweight	Media
<ul style="list-style-type: none"> We are positive on business to business media spending related companies Corporate profit as % GDP at record levels Companies starting to invest for future growth; focus seems to be on development spend rather than capacity expansion which is good for media companies No exposure to advertising related media stocks where we see continued risk from structural changes to that industry 	

Overweight	IT Software
<ul style="list-style-type: none"> Strong belief that companies starting to accelerate investment spend IT spend remains a high priority for investment 	

Charter European

Portfolio themes

Underweight

Telecoms

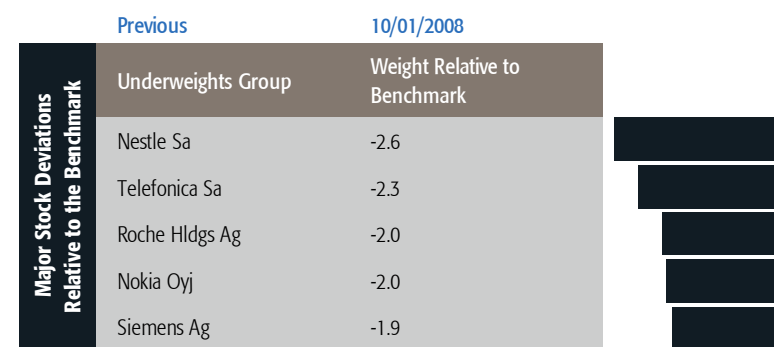
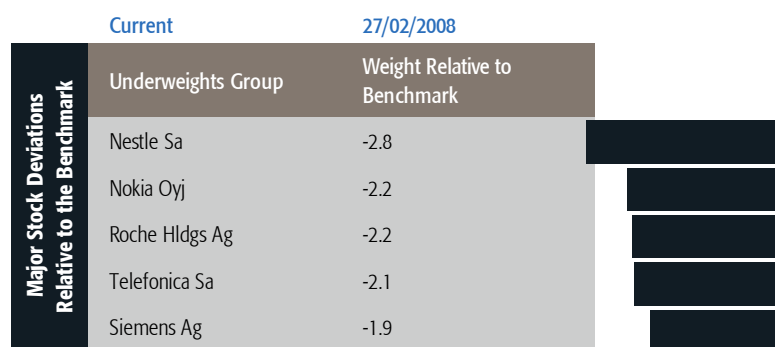
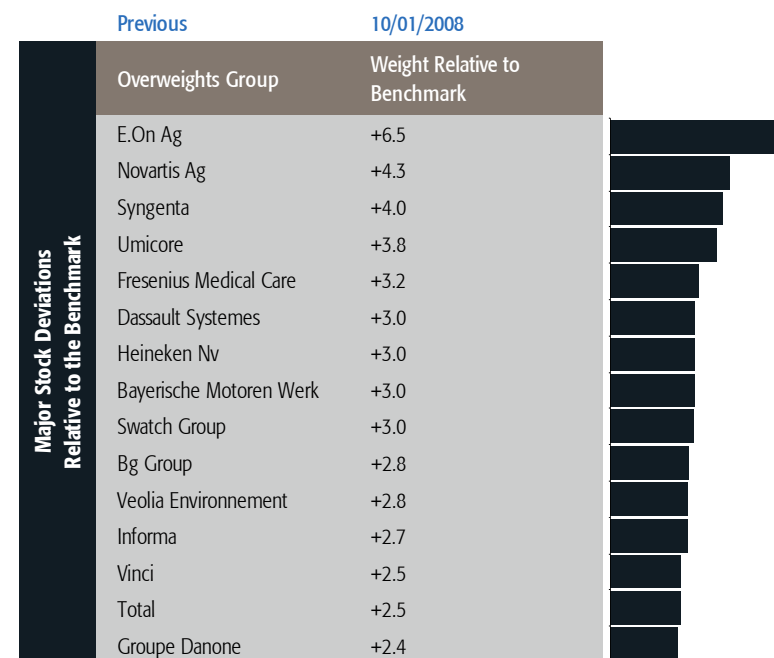
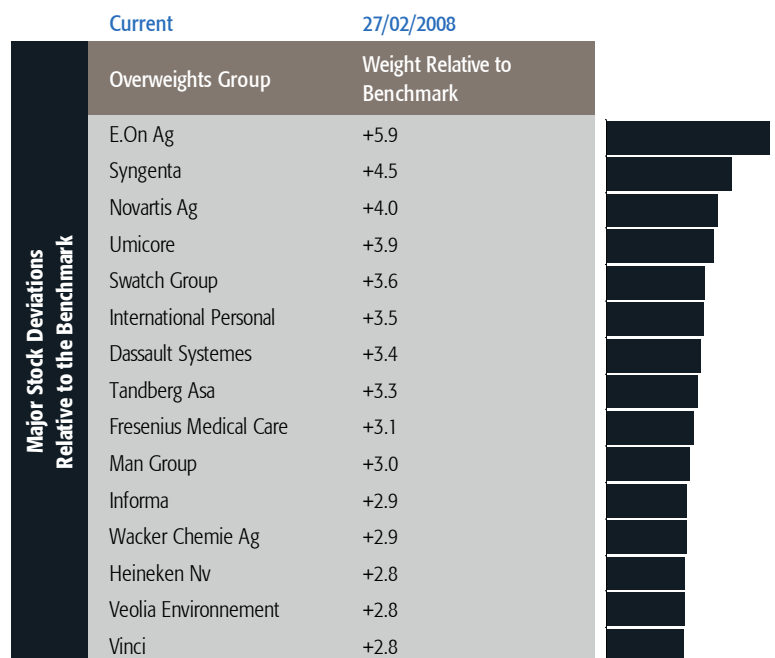
- Fixed line telecoms market remains under huge structural pressures
- Consolidation and M&A expectations which helped push the sector forward in the 2H 2006, may prove optimistic due to national and political pressures

Underweight

Banks

- Investment bank related profits are at peak levels? Market too relaxed about challenges to such profits from lower revenues and higher costs
- Focus on Asian exposure and position in the consolidating Italian bank market

Major stock deviations relative to the benchmark

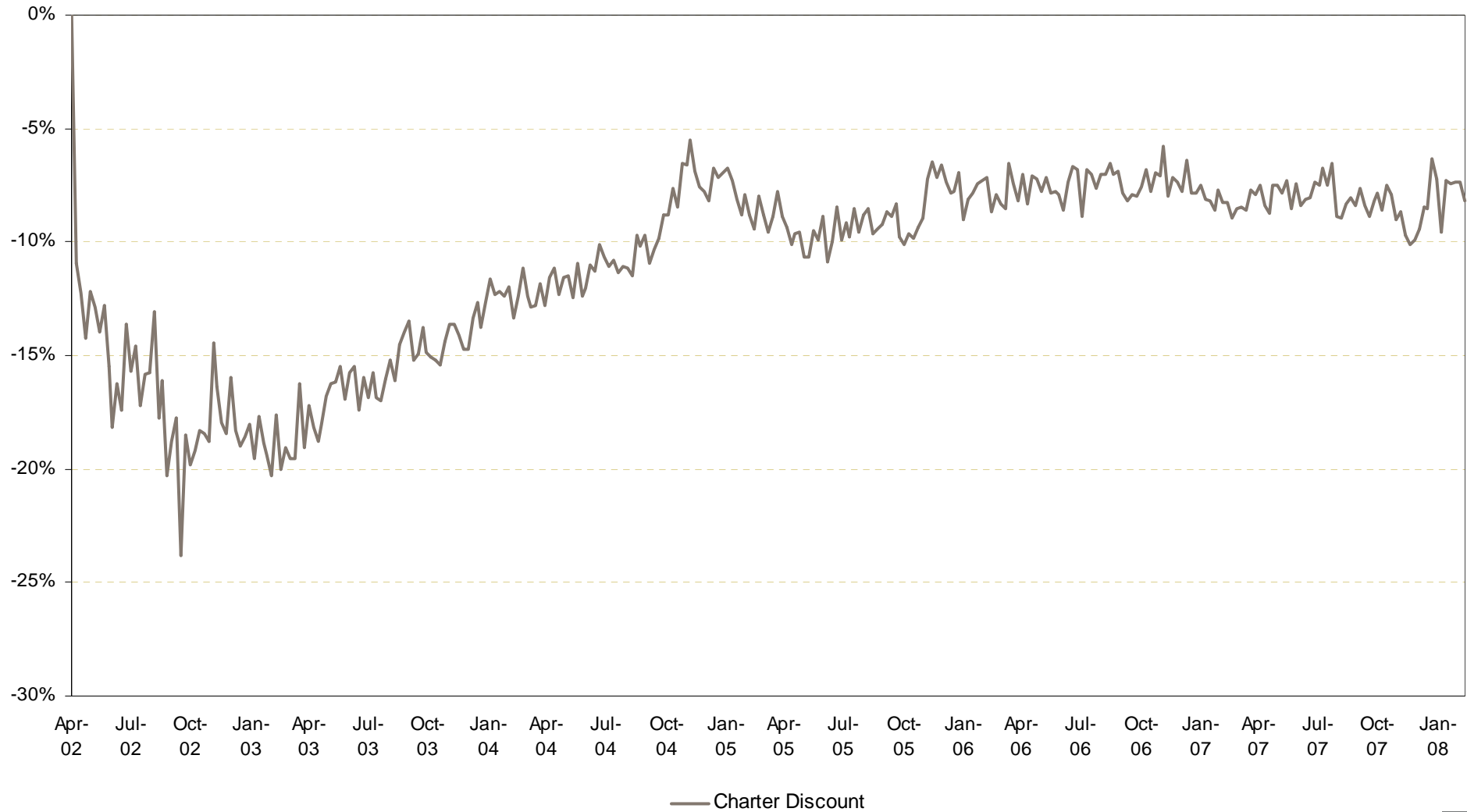


Top 10 holdings

Top Ten Holdings	%
E.On Ag	7.7
Novartis Ag	5.8
Syngenta	4.9
Total	4.1
Umicore	4.0
Swatch Group	3.8
International Personal	3.5
Dassault Systemes	3.5
Veolia Environnement	3.5
Fresenius Medical Care	3.3

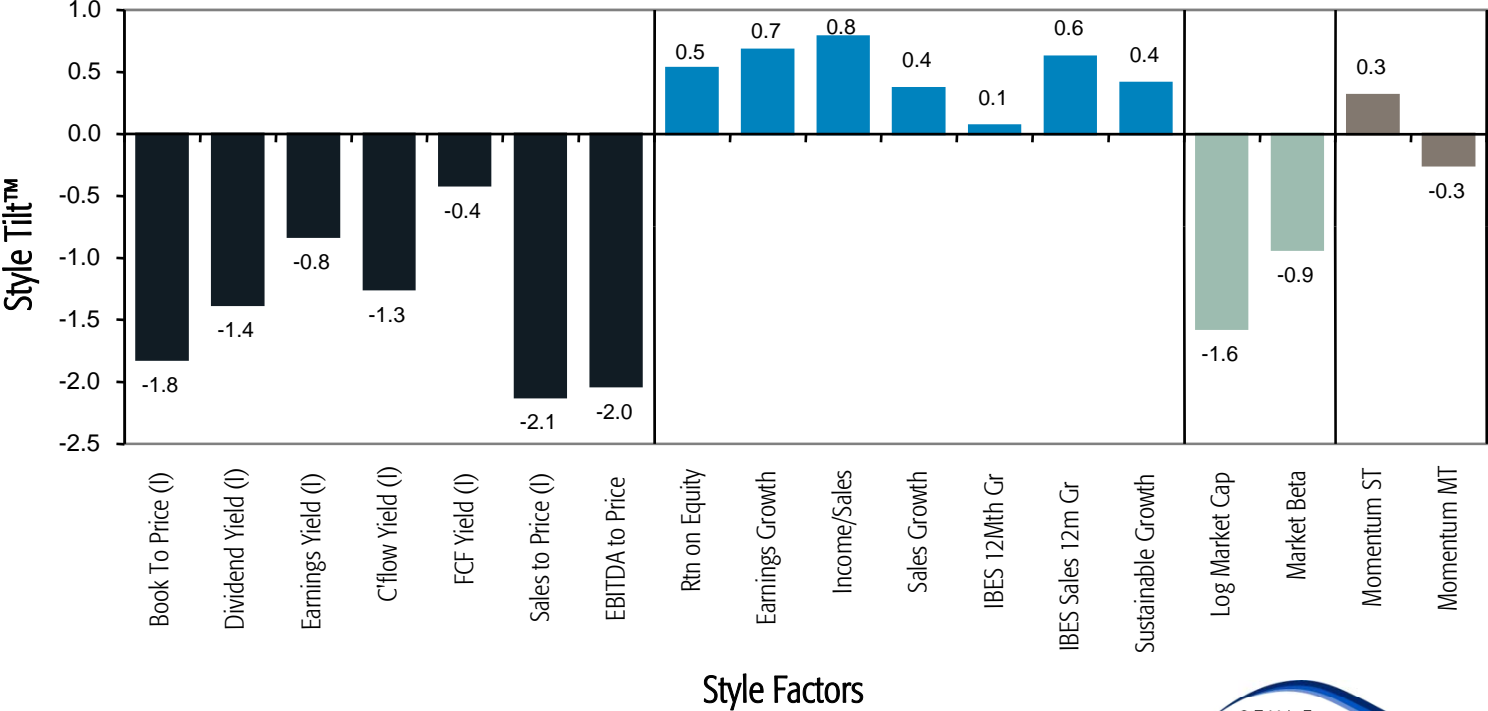
Charter European Trust – Discount to NAV

Charter Discount



Source: Thomson Datastream, as at 27 February 2008.

Portfolio Style Skyline



Style Factors



Source: Style Research, as at 29 February 2008.

Outlook

- Earnings growth still positive, but slowing as higher interest rates, oil prices and weaker US housing market affect top line growth and higher input costs squeeze margins. Slowing more a feature in the US than elsewhere
- European corporate profit growth continues to be assisted by self help initiatives
- Volatility has risen off lows as growth slows and sub-prime concerns mount
- Equities continue to look good value relative to bonds and fair value against their own history
- Within equity markets, which areas should do well?
 - Growth oriented stocks look attractive versus value
 - High quality stocks appear under priced by the market
 - Large cap stocks look attractive versus small cap

An environment favouring quality, growth stock picking

Disclaimer

Please remember that past performance is not a guide to future performance. The value of an investment and the income from it can fall as well as rise as a result of market fluctuations and you may not get back the amount originally invested. You should not make any assumptions about the future on the basis of this information.

Except for products investing exclusively in the UK, currency exposure exists in all funds. These funds will suffer a negative impact if sterling rises in value relative to the currencies in which the investments are made.

Disclaimer

The information is for the sole use of the addressee, who it is believed is a professional customer as defined by the Financial Services Authority, Allianz Global Investors staff or consultants and independent financial advisers who have received instructions from RCM (UK) Ltd. Some of the products or product types are not suitable for retail investors. If you are not sure if you are a professional customer as defined by the Financial Services Authority please contact our Compliance Department. Furthermore, the material contained herein is directed only at persons or entities in any jurisdiction or country where such information and the use thereof is not contrary to local law or regulation. Accordingly, it may not be reproduced in any form without the express permission of RCM (UK) Ltd. To the extent that it is passed on, care must be taken to ensure that this is in a form which accurately reflects the information presented here and that it complies with the laws and regulations of any jurisdiction in which it is used.

While RCM (UK) Limited believe that the information is correct at the date of this document, no warranty or representation is given to this effect and no responsibility can be accepted by RCM (UK) Limited to any intermediaries or end users for any action taken on the basis of the information.

Regulatory Status

The information contained herein including any expression of opinion is for information only and is given on the understanding that anyone who acts on it, or changes their opinion thereon, does so entirely at their own risk.

Allianz Global Investors represents products and services of RCM (UK) Ltd. Authorised and regulated by the Financial Services Authority, their registered office 155 Bishopsgate, London, EC2M 3AD, telephone +44 (0)20 7859 9000 and is a wholly owned subsidiary of Allianz SE. This document has been issued in the UK by RCM (UK) Ltd. and complies with UK regulations. Registered in England No 2014586. Member of the Allianz Global Investors Marketing Group.

For our mutual protection, calls are recorded and may be used for quality control and training purposes, however, Allianz Global Investors reserves the right to use such recordings in the event of a dispute.

Web site: www.rcm.co.uk

Web site: www.allianzgi.co.uk

Charter European Trust PLC

Presentation to the Annual General Meeting,
18th March 2008

informed
RCM



Charter European Trust PLC
Annual General Meeting, 18th March 2008

Resolution 1 - to receive and adopt the Annual Financial Report

For	Discretion	Against	Withheld
8,309,391	54,107	0	0

Charter European Trust PLC
Annual General Meeting, 18th March 2008

Resolution 2 - to declare a final ordinary dividend of 2.00p per share

For	Discretion	Against	Withheld
8,308,333	54,107	1,058	0

Charter European Trust PLC
Annual General Meeting, 18th March 2008

Resolution 3 - to re-elect Mr R O Bernays as a Director

For	Discretion	Against	Withheld
7,967,404	54,107	191,596	150,390

Charter European Trust PLC
Annual General Meeting, 18th March 2008

Resolution 4 - to re-elect Mrs V K Hastings as a Director

For	Discretion	Against	Withheld
7,842,600	54,107	327,408	139,383

Charter European Trust PLC
Annual General Meeting, 18th March 2008

Resolution 5 - to re-elect Dr E M Vallance as a Director

For	Discretion	Against	Withheld
7,761,781	54,107	422,464	125,146

Charter European Trust PLC
Annual General Meeting, 18th March 2008

Resolution 6 - to re-elect Mr C G H Weaver as a Director

For	Discretion	Against	Withheld
8,021,360	54,107	149,183	138,848

Charter European Trust PLC
Annual General Meeting, 18th March 2008

Resolution 7 - to re-elect Mr N T Simon as a Director

For	Discretion	Against	Withheld
7,815,711	56,162	362,073	129,551

Charter European Trust PLC
Annual General Meeting, 18th March 2008

Resolution 8 - to approve the Directors' Remuneration Report

For	Discretion	Against	Withheld
7,380,253	54,107	784,462	144,676

Charter European Trust PLC
Annual General Meeting, 18th March 2008

Resolution 9 - to re-appoint Grant Thornton UK LLP as Auditors

For	Discretion	Against	Withheld
7,983,237	56,393	139,533	184,335

Charter European Trust PLC
Annual General Meeting, 18th March 2008

Resolution 10 - to authorise the Directors to determine the Auditors' remuneration

For	Discretion	Against	Withheld
7,949,687	54,107	210,434	149,270

Charter European Trust PLC
Annual General Meeting, 18th March 2008

Resolution 11 - to renew the Directors' authority to allot Ordinary Shares

For	Discretion	Against	Withheld
7,546,337	54,107	762,917	137

Charter European Trust PLC
Annual General Meeting, 18th March 2008

Resolution 12 - to authorise the Company to use electronic communications

For	Discretion	Against	Withheld
7,763,954	60,011	531,471	8,062

Charter European Trust PLC
Annual General Meeting, 18th March 2008

Resolution 13 - to disapply pre-emption rights

For	Discretion	Against	Withheld
7,596,902	59,902	510,190	196,503

Charter European Trust PLC
Annual General Meeting, 18th March 2008

Resolution 14 - to authorise the Company to make market purchases of Ordinary Shares

For	Discretion	Against	Withheld
7,860,628	54,107	405,487	43,276

Charter European Trust PLC

Presentation to the Annual General Meeting,
18th March 2008

informed
RCM

